





Overview

Established on 25 April 2014, **PT JSI Sinergi Mas** is a holding company that develops coal and other mineral resources. Through direct investment or joint operations with strategic partners, we continuously grow to satisfy their increasing demand, both domestic and international.

Vision

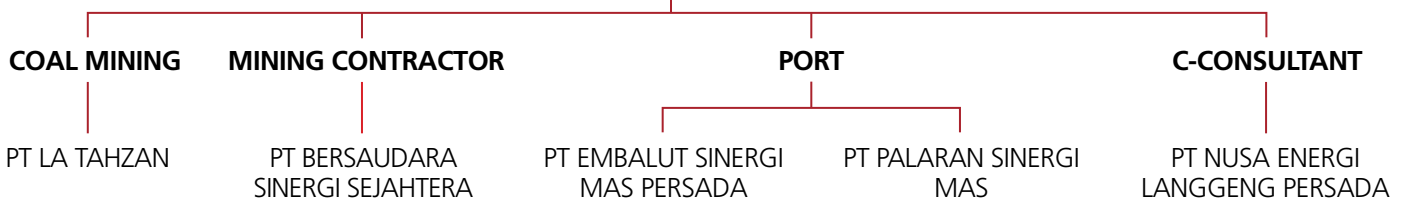
Strive to be Asia's leading integrated Mineral Mining Company targeted for High-End Applications.

Mission

- Increasing value in business units and other business developments to improve benefits to its stakeholder.
- To enhance the life of Internal Stakeholders and the people they serve through the application of the world's best practices.
- To enable the people in our companies to accomplish more collectively than they could separately.

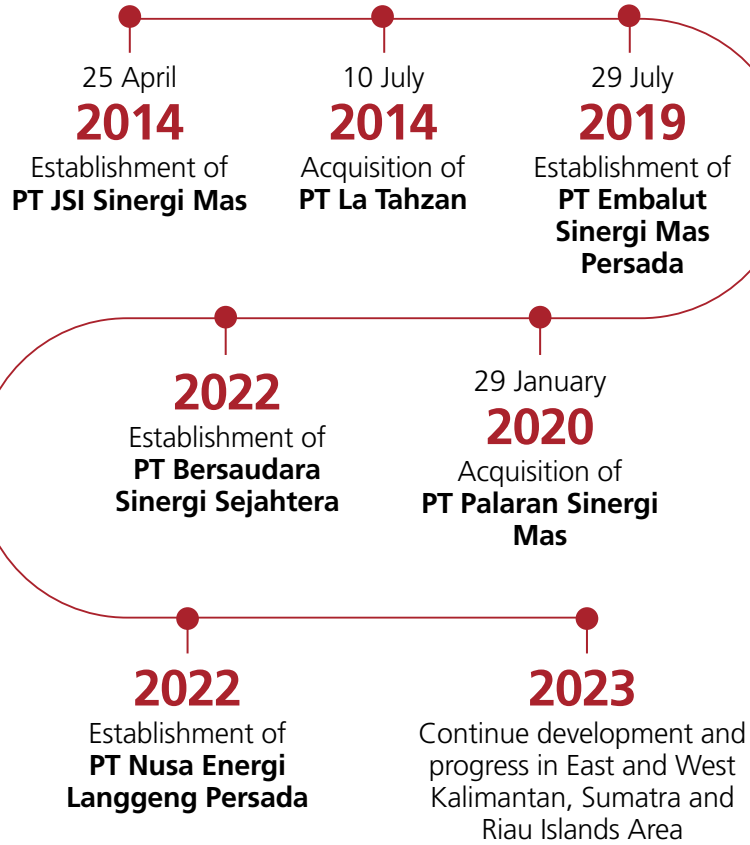


Corporate Structure





Timeline



Management



Seated
(from left to right)

- **Jamal Abdul Nasir Bamadhaj**
President Director
- **Sayid Muhammad Riyadh**
Commissioner

Standing
(from left to right)

- **Hardy Suherman**
Director
- **Surya Alfath**
Chief Financial Officer
- **Sayed Noval**
Director
- **Muhammad Amin**
Chief Strategic Officer

Coal Mining



PT La Tahzan

- Coal Mining
- Location : Embalut Village, Kec. Tenggarong Seberang, Kab. Kutai Kartanegara, East Kalimantan, Indonesia
- IUP OP : 503/436/IUP-OP/BPPMD-PTSP/III/2016
- NIB : 8120002990462
- Date of Incorporation : 05 April 2006
- ET : 03.ET-04.21.0511

PT La Tahzan is a coal mine that is located in Embalut Village, East Kalimantan, Indonesia, with a concession area of 497.49 hectares. The monthly production is currently between 20,000 - 30,000 MT. PT La Tahzan is committed to maintaining production and quality for our customer satisfaction.



Typical Products Specifications

Gross Caloric Value (GAR)	5000 Kcal/Kg
Total Moisture (ARB)	22 pct
Inherent Moisture (ADB)	15 pct
Total Sulphur (ADB)	< 1.0 pct
Ash Content (ADB)	10 pct
Volatile Matters (ADB)	40 pct Approx
Fixed Carbon (ADB)	By Difference
HGI	45 Approx
Size 0-50 mm	90 pct Min

Clients

PT La Tahzan has supplied coal for both domestic and international markets, directly to the end-user or through international coal traders to countries such as South Korea, China, Vietnam, etc.

1. Avra Commodities Pte Ltd.
2. Saii Resources Pte Ltd
3. Wonder Star Trading Llc
4. Batu Bara Ecoenergy Co Ltd.
5. PT Arcko Global Energi
6. PT Batubara Global Energy
7. PT PLN Batubara Niaga
8. Etc.



PT Bersaudara Sinergi Sejahtera (BSS)

- Full-Service Mining Contractor
- IJUP : 09022200540450001
- NIB : 0902220054045

PT Bersaudara Sinergi Sejahtera (BSS) is a full-service mining contractor. Serving clients by providing a combination of a professional team and excellent performance.

Clients

1. PT La Tahzan
2. PT Dian Jaya Artha
3. PT Usaha Kawan Bersama
4. PD Baramarta



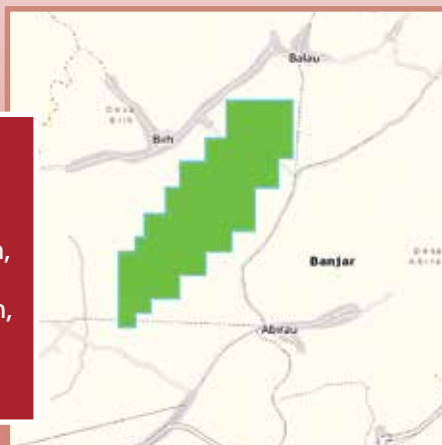
PT La Tahzan
Location:
Kec. Tenggarong
Seberang, Kab.
Kutai Kartanegara,
East Kalimantan,
Indonesia
Area: 497.49 Ha



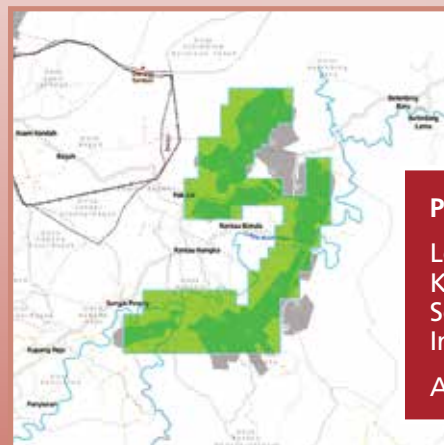
PT Dian Jaya Artha
Location:
Kampung Tubaan,
Kec. Tabalar,
Kab. Berau,
East Kalimantan,
Indonesia
Area: 1,205.00 Ha



PT Usaha Kawan Bersama
Location:
Kec. Karang Intan,
Kab. Banjar,
South Kalimantan,
Indonesia
Area: 196.70 Ha



PD Baramarta
Location:
Kab. Banjar,
South Kalimantan,
Indonesia
Area: 2,634.55 Ha



Port



PT Embalut Sinergimas Persada (ESP)

PT Embalut Sinergimas Persada (ESP) engages in coal port management services located in Embalut Village, Kec. Tenggara Seberang, Kab. Kutai Kartanegara, East Kalimantan, with a total area of 15 hectares. ESP is currently used for coal stockpile and loading facilities, which can accommodate about 100,000 MT of coal per month.

ESP continuously develops a jetty facility to increase the output of up to 200,000 MT coal per month to fulfill customer requirements and satisfaction.

Services

The jetty accepts coal barges with sizes ranging from 270 to 300 feet. Currently, it is used by PT La Tahzan, PT Beringin Alam Raya, PT Insani Bara Perkasa, and PT Serangkai Jaya.





PT Palaran Sinergi Mas (PSM)

PT Palaran Sinergi Mas (PSM) engages in coal port management services with a port located in Bantuas Village, Kec. Palaran, Samarinda, East Kalimantan. It has an extensive stockpile of approximately 32 hectares which can accommodate about 150,000 mt of coal per month. In addition, loading conveyors are present with a maximum capacity of 1,350 mt/hour.

Services

Under the supervision of experts in the field of coal port management, PSM provides the best service according to the needs of the customers, from hauling, crushing, and treatment. Currently, it is used by PT Insani Bara Perkasa.





Contact Us:

PT JSI SINERGI MAS

📍 Recapital Building 3rd Floor
Jl. Aditjawardana No. 55
Melawai, Kebayoran Baru
South Jakarta 12160
Indonesia

☎ +62 21 722 6825

✉ corsec@jsigroup.co.id

🌐 www.jsisinerjim.co.id

Our Clients



8GE PT. Batubara Global Energy



LG LG International



PLN BATUBARA
NIAGA



PT. INSANI BARAPERKASA
Coal Mining



UKB USAHA
KAWAN
BERSAMA

WONDER STAR
Trading LLC

